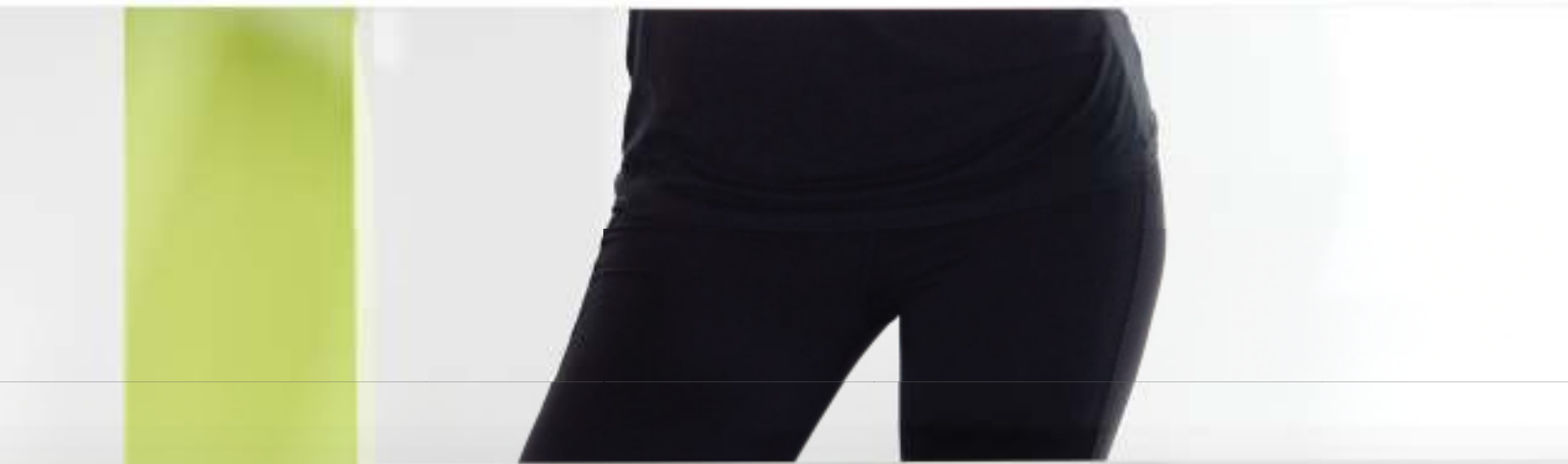


teknion upStage



teknion

Just as mid-century modern design transformed 20th century interiors, upStage™ brings a new topography to today’s office. Based on a simple platform or stage, upStage frees users from the constraints of a benching frame or panel, allowing you to build along a horizontal or vertical plane to create layered workspaces and multi-storey volumes.

upStage sets the stage for creativity, innovation and transformation, exhibiting characteristics such as:

- Real Furniture – a refined design emulates high-end residential furnishings
- Creative Freedom – a rich material vocabulary provides opportunity to be original and bold
- User Choices – an array of versatile furniture pieces enables tailoring of workspace layouts





tables	storage	accessories	task seating
Surface: <i>Foundation Laminate, Very White</i>	Case: <i>Source Laminate, Urban Walnut</i>	Accent: <i>Tangelo, Aircraft Primer, Verde (next page)</i>	Contessa: <i>Tess Mesh, Light Grey; Heather Felt, Noil</i>
Leg: <i>Mica, Very White; Flintwood, Poppy Seed</i>	Front: <i>Source Laminate, Very White; Back-Painted Glass, Tangelo</i>		

A clean, light residential aesthetic and a rich material vocabulary create an appealing office landscape enlivened by a creative use of vibrant color and varied textures. Design details, such as the elegant wood and metal Y Leg, endow the furniture with a level of refinement that approaches that of high-end residential furnishings.









08

tables	storage	accessories	task seating
Surface: <i>Foundation Laminates, Very White</i>	Case: <i>Source Laminates, Urban Walnut</i>	Accent: <i>Tangelo, Platinum</i>	Contessa: <i>Tess Mesh, Lime Green; Fundamentals, Verde</i>
Leg: <i>Mica, Very White; Flintwood, Poppy Seed</i>	Front: <i>Source Laminates, Very White; Back-Painted Glass, Tangelo</i>		

A truly unique structural solution, the staging unit integrates a full complement of desks, height-adjustable tables, cabinets, shelves, cubbies and screens. Every element moves into place and fits together, offering fresh design concepts.

A rich material vocabulary provides an opportunity to be original and bold. upStage offers a myriad of color and texture options, including wood veneer, translucent and back-painted glass, perforated metal and a range of beautiful metal finishes.









tables	storage	accessories	task seating
Surface: <i>Flintwood, Poppy Seed</i>	Case/Front: <i>Flintwood, Poppy Seed</i>	<i>Mica, Sepia Bronze</i>	Contessa: <i>Tess Mesh, Light Grey; Leather, Merus Smoke</i>
Leg: <i>Flintwood Poppy Seed; Mica, Sepia Bronze</i>	Handle: <i>Mica, Sepia Bronze</i>		

upStage gives people the ability to organize their space, media and accessories as they choose, combining a variety of configurable elements: bookcases and hutch stackers, cabinets, cubbies and mobile file pedestals that play a dual role as storage and seat. Build up, out and in any direction to fit the space and style.







## tables

Surface: *Foundation  
Laminate, Choice Maple*  
Leg: *Mica, Very White;  
Accent, Crimson*

## storage

*Source Laminate,  
Choice Maple*

## accessories

*Accent, Crimson*

## task seating

Projek: *Shrinx Veil, Rouge;  
Cross Dye, Carmino*

Comprising an array of versatile furniture pieces, upStage provides the ability to tailor the layout of workspaces. Teams can position desks, pedestals, cubbies and screens where needed to create the workspace that works best for their projects. As priorities change, upStage adapts.









01

upStage's unique Y Leg provides a two-tone expression with a combination of metal and wood. Darker metal and wood finishes convey a classic look.



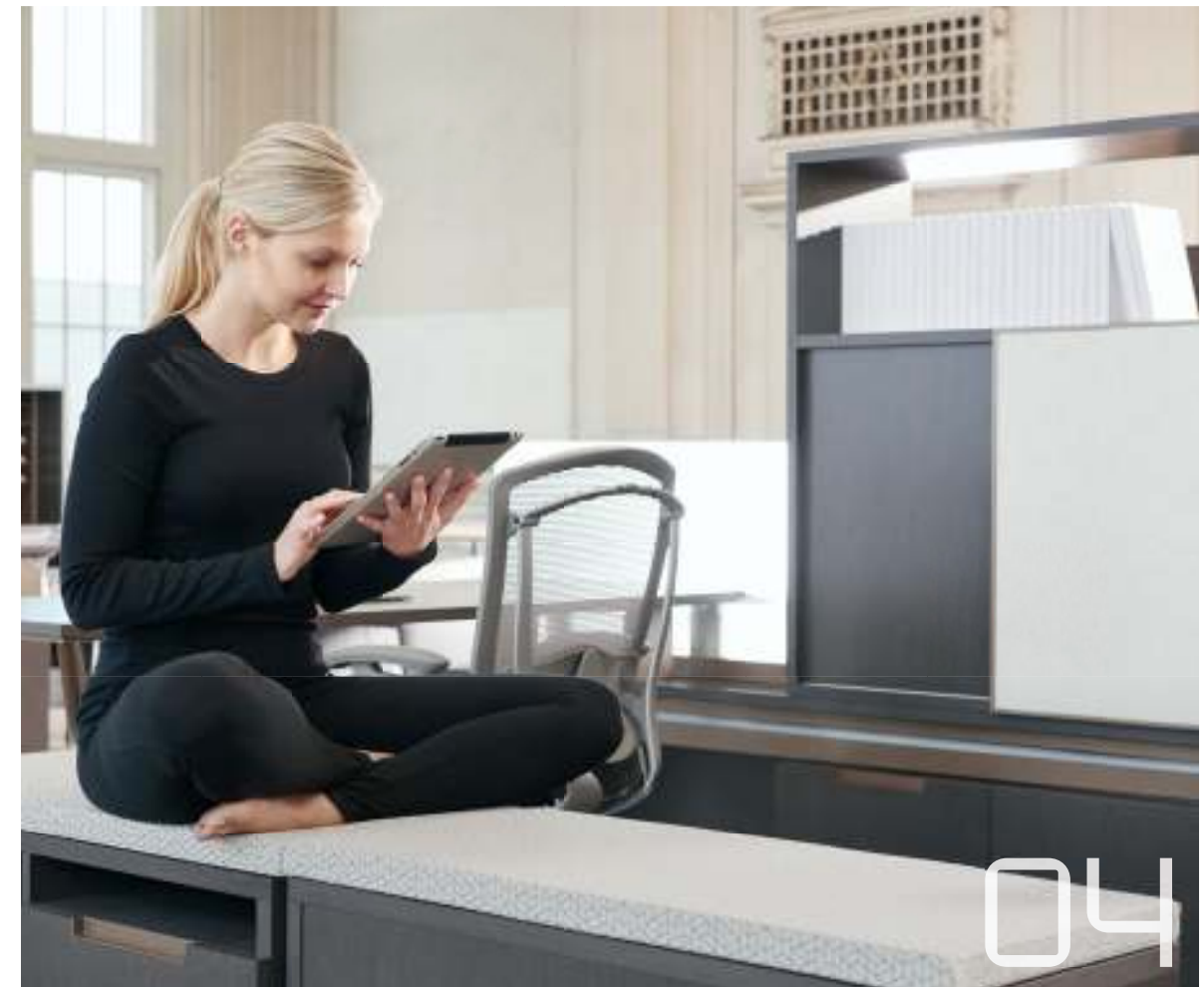
03



02

02

Paper management is facilitated both horizontally and vertically using Hutch Accessory and Mobile Cubby Trays.



04

03

The Variable Bookcase provides casual, see-through privacy, separating workstations from collaborative areas.

04

Mobile and Fixed credenzas serve double duty as a casual seating area when cushions are applied.





05



06



07



08



09



10

05

The Variable Privacy Screen mounts magnetically, allowing users to manipulate their desired level of privacy.

06

Back-painted glass on sliding doors provides a writable surface and splash of color to the workstation.

07

upStage's unique Y Leg provides a two-tone expression with a combination of metal and wood. A mix of light and dark finishes conveys a contemporary look.

08

upStage storage units and hutches feature a variety of cubby areas to house Mobile Cubby Trays when not in use.

09

Fixed Perforated louvers provide visual space division, while allowing light and creating openness in the workstation.

10

Articulating louvers on the hutch allow the user to control their level of privacy.



[www.teknion.com](http://www.teknion.com)

#### IN CANADA

1150 Flint Road  
Toronto, Ontario  
M3J 2J5 Canada  
Tel 866.teknion  
866.835.6466

#### IN THE USA

350 Fellowship Road  
Mt Laurel, New Jersey  
08054 USA  
Tel 877.teknion  
877.835.6466

#### OTHER OFFICES LOCATED IN

Europe, South and Central America,  
Middle East, Asia and Russia  
For regional contact information  
go to [www.teknion.com](http://www.teknion.com)

CAN/US/INT 03-16

©Teknion 2016

®, ™ trade marks of Teknion  
Corporation and/or its subsidiaries or  
licensed to it. Patents may be pending.

Contessa is designed by Giugiaro  
Design and sold under license from  
Okamura Corporation.

Sabrina is co-developed by Giugiaro  
Design and the Okamura Corporation;  
and sold under license from Okamura  
Corporation.

Projek is designed and sold under  
license from Orangebox Limited.

Brochure Design: Vanderbyl Design  
Printed in Canada. BR-100-0074EN

