

teknion sabrina



teknion

Sabrina is an infinitely classic, yet modern, mesh-back task chair. Visually sculptural in frame and profile, Sabrina features an innovative back ring structure symbolizing the interconnection of comfort and design. Sabrina's design incorporates a ring-shaped backrest for both fit and flex comfort. The inner ring provides support and backwards bending in the body's natural position, while the outer frame gently twists to either side for extra flexing.





sabrina
Frame/Base: *Ebony*
Mesh: *Iron*
Seat Upholstery: *Ample, Sunburst*

interpret
Flintwood: *Drift Oak*
Finish: *Ebony*

06

sabrina
Frame: *Very White*
Mesh: *Chainlink*
Seat Upholstery:
Full Wool, Hot Stone
Base: *Polished Aluminum*

interpret
Flintwood: *Cocoa*
Brown Flint
Finish: *Platinum*

features



01



02

01 fit & flex back
The back structure features an inner ring that conforms to user movements, while the outer frame twists for extra flexing.

02 headrest
The streamlined design of the back's structural ring is mirrored in the optional headrest, featuring coordinating tensile mesh and outer frame.



03



04

03 back ring accent
The back ring features a Polished Aluminum detail accent for a refined finish and distinctive look.

04 fixed arm
Optional fixed polished aluminum arm chair is ideal for meeting and management applications.

frame finishes



05



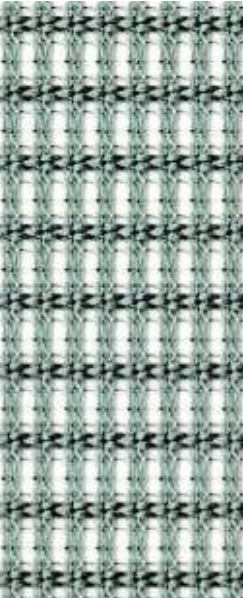
06

05 very white/ebony frame
Shown with Basalt mesh

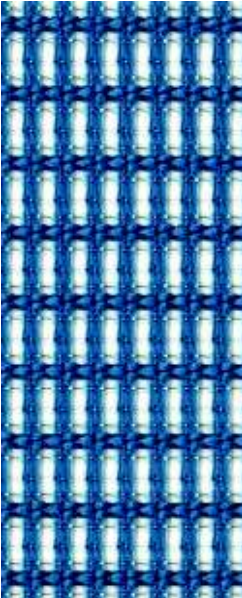
06 very white/ebony frame
Shown with Iron mesh

mesh options

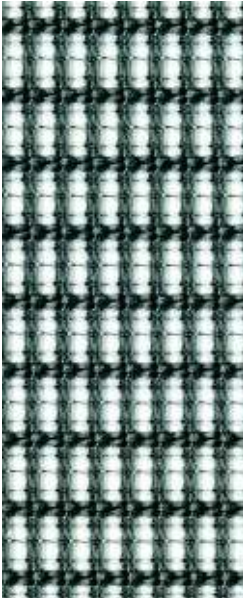
basalt



lapis



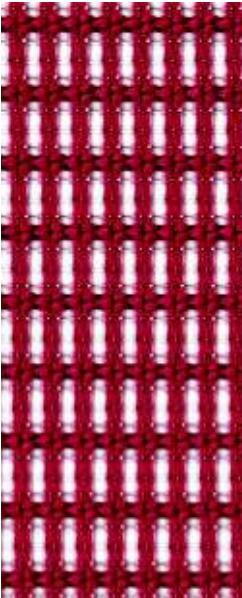
chainlink



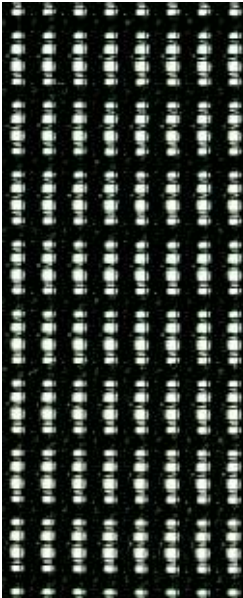
brier



banner



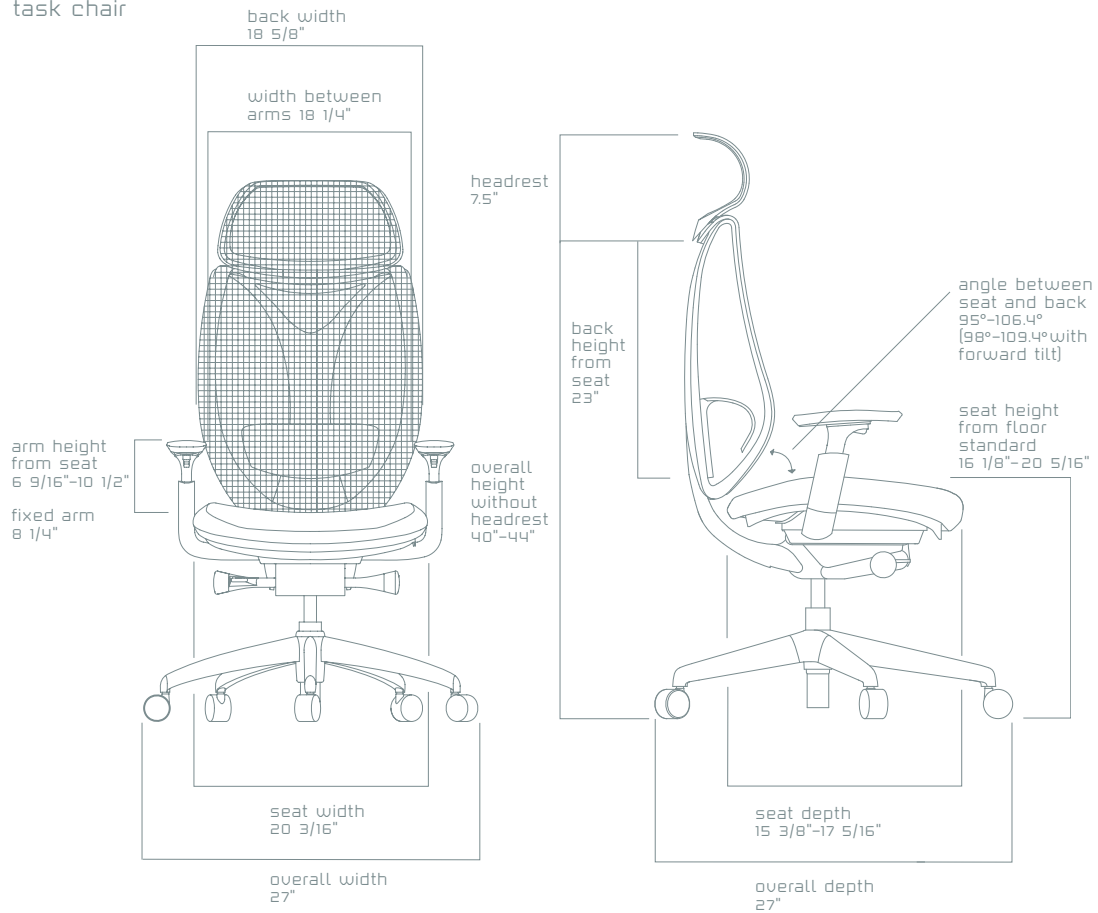
iron





- Height adjustment range of 4 inches allows users to position seat for proper posture and circulation
- Seat depth adjustment range of 2 inches promotes proper contact with the chair back, helping reduce pressure behind the knees
- Synchro-tilt mechanism with tilt tension and lock
- Optional adjustable armrests pivot inward/outward 20 degrees, up/down 4 inches and forward/backward 2 inches
- Optional height-adjustable lumbar of 2 ½ inches enhances comfort and ergonomic performance
- Forward-tilt option provides users with additional posture ranges, allowing the seat pan angle to tilt downward 3 degrees while synchronizing the back to the appropriate ergonomic position

task chair



www.teknion.com

IN CANADA

1150 Flint Road
Toronto, Ontario
M3J 2J5 Canada
Tel 866.teknion
866.835.6466

IN THE USA

350 Fellowship Road
Mt Laurel, New Jersey
08054 USA
Tel 877.teknion
877.835.6466

OTHER OFFICES LOCATED IN
Europe, South and Central America,
Middle East, Asia and Russia
For regional contact information
go to www.teknion.com

CAN/US/INT 07-18

©Teknion 2016

®, ™ trade marks of Teknion
Corporation and/or its subsidiaries or
licensed to it. Patents may be pending.

Sabrina is co-developed by Giugiaro
Design and the Okamura Corporation;
and sold under license from Okamura
Corporation.

Brochure Design: Vanderbyl Design
Printed in Canada. BR-110-0020EN

swivel stool

